



Furniture components



ABOUT US:

NMF Metal is a Lithuanian company specializing in tube processing and metal furniture components manufacturing.

- Full cycle of metal tube processing since 2005
- Flexible production available for mass and small customized production
- Current production facilities of 4000 m2

STANDARD CARBON STEEL LEGS



Standard diameter	50mm / 60mm
Height	50mm – 290mm
Screw	M8 – M10 (height is optional)
Package	Set of 4 pcs in a plastic bag (or according to your specifications)
Finish	Brushed steel with mat or gloss lacquer (or any other RAL color)

These are standard dimensions / options that can be adjusted if necessary. We can also offer various mounting brackets for all our legs and other solutions.

STANDARD ALUMINUM LEGS



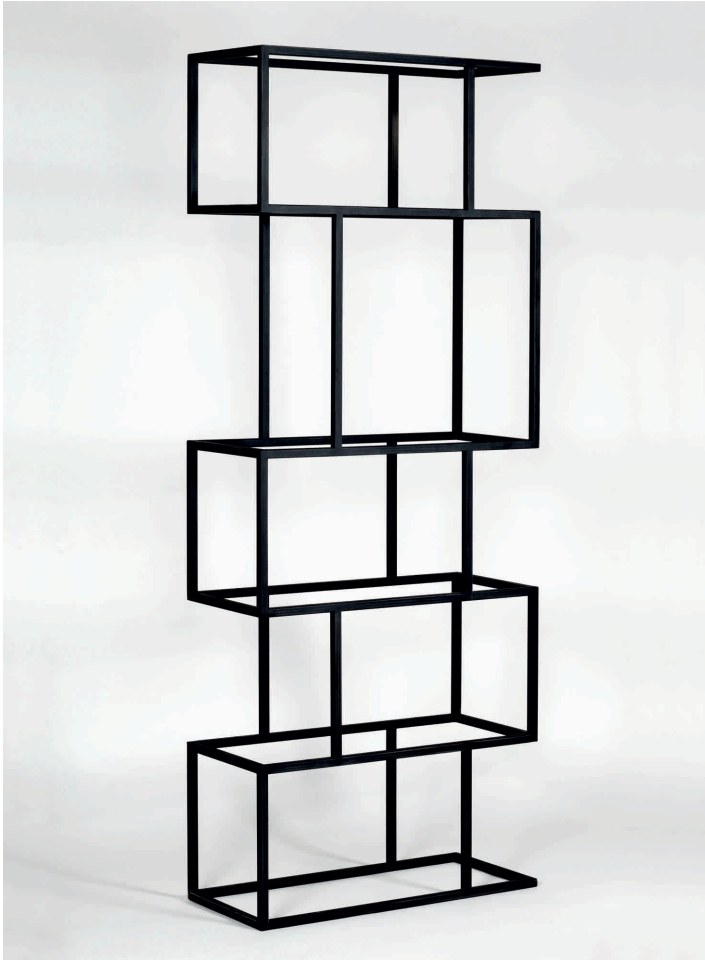
Maximum diameter	50mm
Maximum height	230mm
Screw	M8 (height and thread size adjustable to your specifications)
Package	Set of 4 pcs in a carton box (or other)
Finish	Standard aluminium, polished, copper / brass / satin lacquer, any other RAL color

Design options can be selected from our website or we can offer a new design according to your drawings or a simple hand sketch.

CARBON STEEL LEGS



SHELF FRAMES



BENDED CHAIR FRAMES

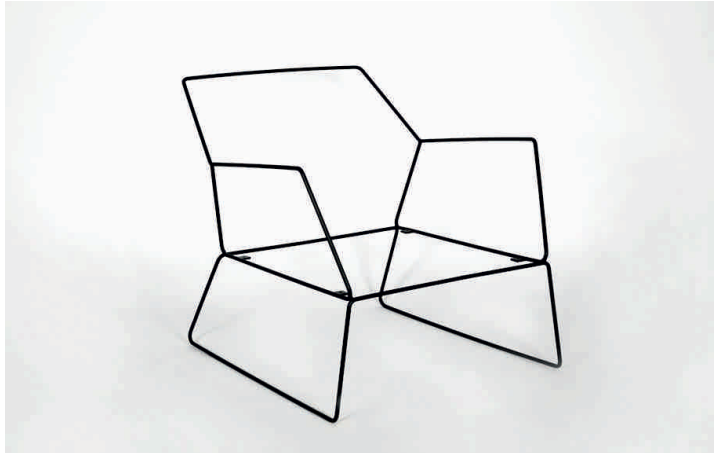
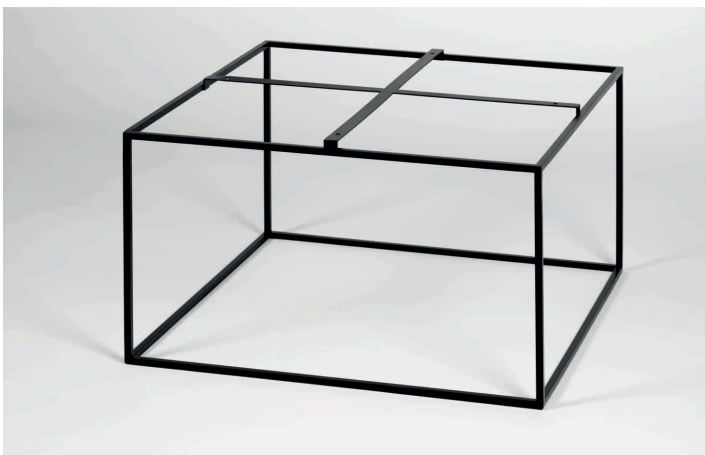


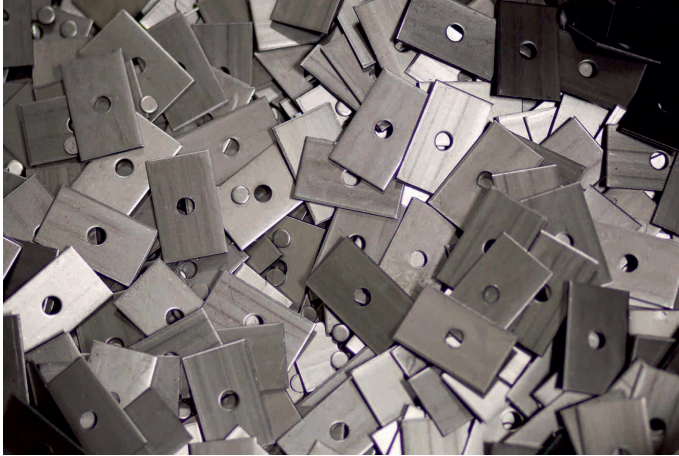
TABLE FRAMES



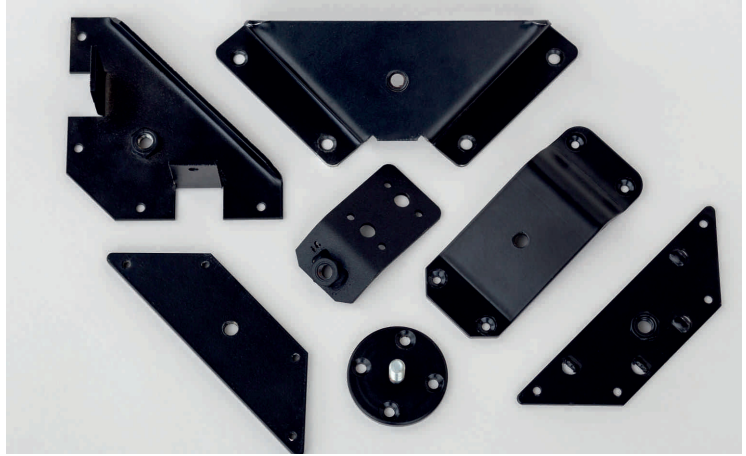
NECKRESTS



STAMPED/ PUNCHED METAL PARTS



MOUNTING BRACKETS



ADJUSTABLE METAL PARTS



HANDLES



We can

- Give support in your design project
- Make a custom design product
- Change size, colour or material on a standard product

We are always open for non-standard Quotes – our priority is to address our customers individual needs. We will take care of all required processes for you, ranging from planning and manufacture of a prototype to serial production.

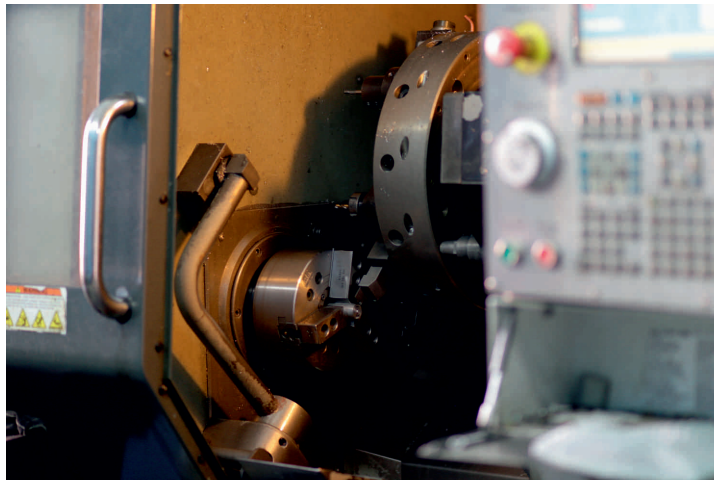
We offer

- CNC Machining
- CNC Tube bending
- Robot and manual welding
- Metal stamping
- Tube brushing / polishing
- Powder coating
- Assembly

Having a strong manufacturing base and experienced staff as well as reliable partners allows us to take an idea from a client and develop it to a shelf-ready product.

CNC LATHE MACHINING

- 2 axis CNC lathe HASS ST-20, capable of turning products up to 300 mm in length and up to 50 mm in diameter.
- High precision part manufacturing
- Bar feeder for continuous production

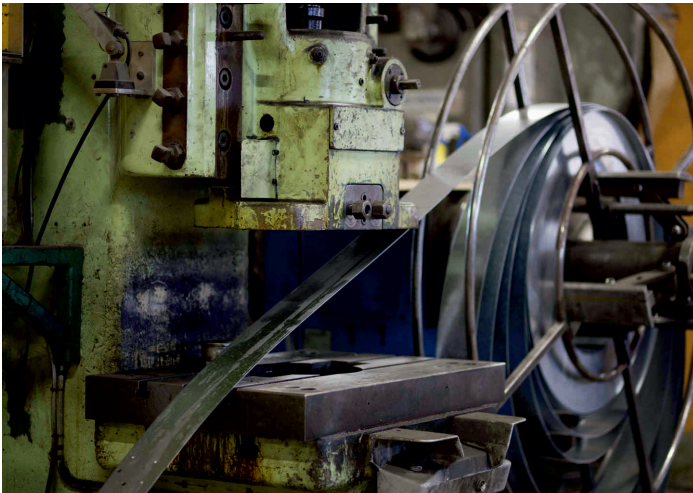


CNC TUBE BENDING

- Tube bending and rolling service for tubes made of steel, aluminum, brass, copper and stainless steel.
- 3 stack 4 axis bending, capable of forming complex shapes with different radius on the same tube
- Bending tubes up to 38 mm in diameter

WELDING

- MIG welding (manual and robot)
- TIG welding (manual)
- Spot welding



METAL STAMPING

- High volume production
- Low part manufacturing cost
- Presses up to 120 t power

POWDER COATING

- Height of part max 2800 mm
- Length max 2500 mm
- Width max 1800 mm



CONTACTS

JSC "NMF Metal"
J.Basanavicius st. 131
Siauliai, LT-76129
Lithuania

Mob. +370 610 48750
E-mail cs@nmfmetal.eu

www.nmfmetal.eu

OUR CLIENTS ■
FUTURE CLIENTS ■

